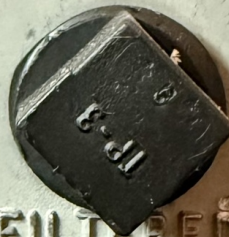


**KI 256 FLIGHT COMMAND INDICATOR**

P/N 060-0017-01 S/N 1 7 4 4 6

TSO C4c/C52a DO 138 ENV. CAT. DA/KM/AAAXXXXXX  
PRESSURE DIFF./FLOW RATE: 4.5-5.2 IN.HG./2.1 C.F.M. MAX  
MAX. DC VOLTS/CURRENT: 14V/0.7A; 28V/0.7A WT. 3.3 LBS.  
**BENDIX/KING**  
GEN. AVIATION AVIONICS DIV.  
KING RADIO CORPORATION  
OLATHE, KANSAS U.S.A. 66062

MODS	1	2	3	4
5	6	7	8	9
				10



**AIR OUTLET**

**FILTERED  
AIR INLET**

**GAGE**



**F-241**