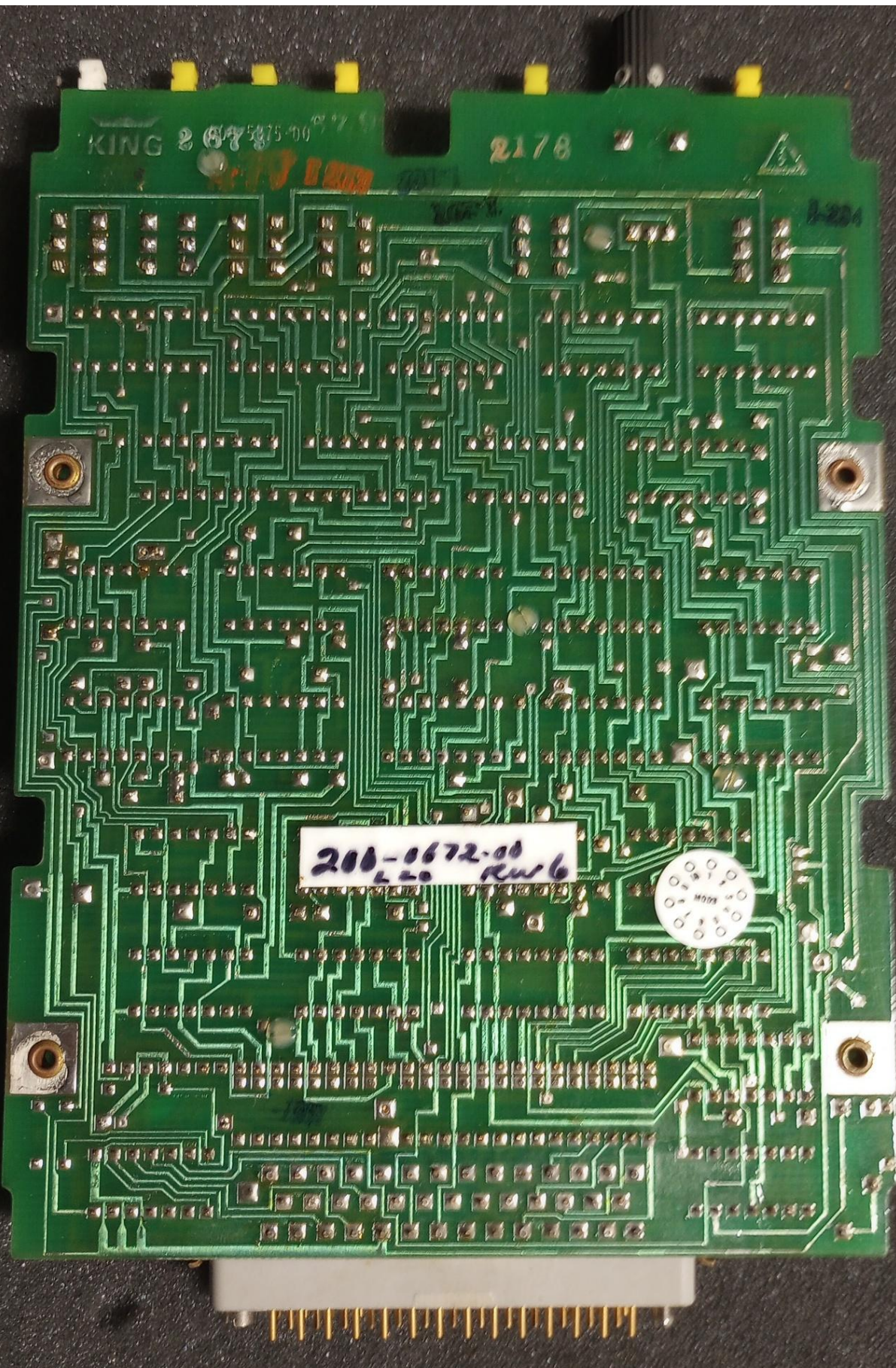


KING 2 675375-00

2178

200-0672-00
L20 R26



10085



Newly Overhauled

EXCHANGE ASSEMBLY

Part # 200-0672-00 *Rw6*
FROM: Mod 0

Check
One:

Exchange
Allowance

Replace
Assembly

Note: If product warranty applies

Warranty Claim # _____
to accompany defective assembly.

— INSTRUCTIONS —

For exchange eligibility both sides of this tag must be completed and the top portion attached to the identical defective assembly being returned.

Return to:
King Radio
Warranty Dept.
400 N. Rogers Rd.
Olathe, Kansas
66061

10085

EXCHANGE
ASSEMBLY



Part # 200-0672-00 *Rw6*
Mod 0

AVIONICS CENTER

LOCATION
RETAIN THIS STUB FOR RECORD