

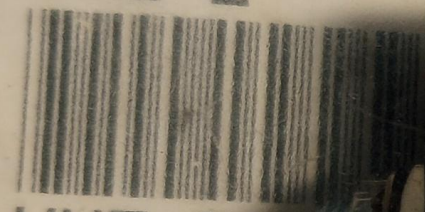
CPU 40123



PNR W31X2M1G5



SHQ 2



UNT EA



Potter & Brumfield  
W31-X2M1G-5  
AMPS: 5  
250VAC MAX.  
50VDC MAX.  
MEXICO 0040

LINE

LOAD

The image shows a black, rectangular circuit breaker component. It has a silver-colored metal handle on the left side. On the right side, there are two silver-colored metal terminals, one labeled 'LINE' at the top and 'LOAD' at the bottom. The component is mounted on a light-colored cardboard surface. The text on the component is printed in white. There are also two small circular marks on the top and bottom edges of the component.